

Please read these instructions
carefully before assembling.



INSTRUCTION MANUAL

OSLO CORNOR GROUP

OSLO CORNOR GROUP

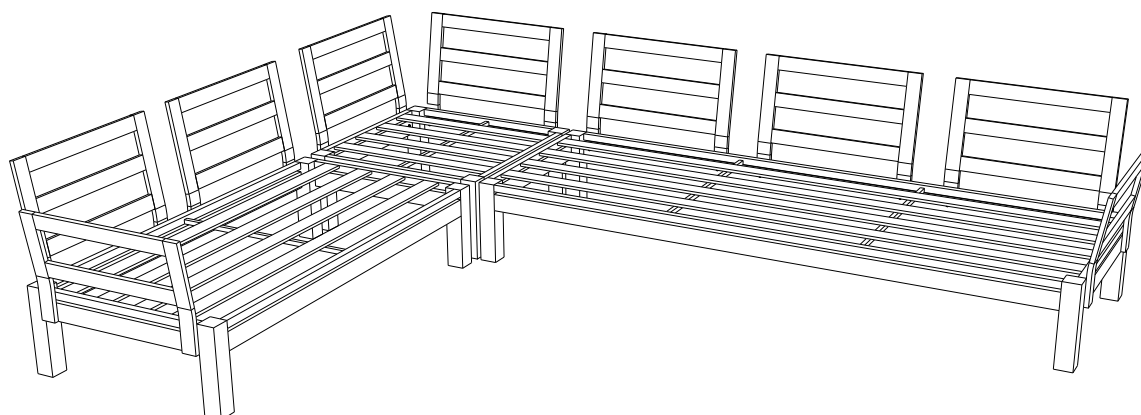
Assembly Requirements:

Number of people required to assemble – 2

Approximate assembly time – 10 minutes

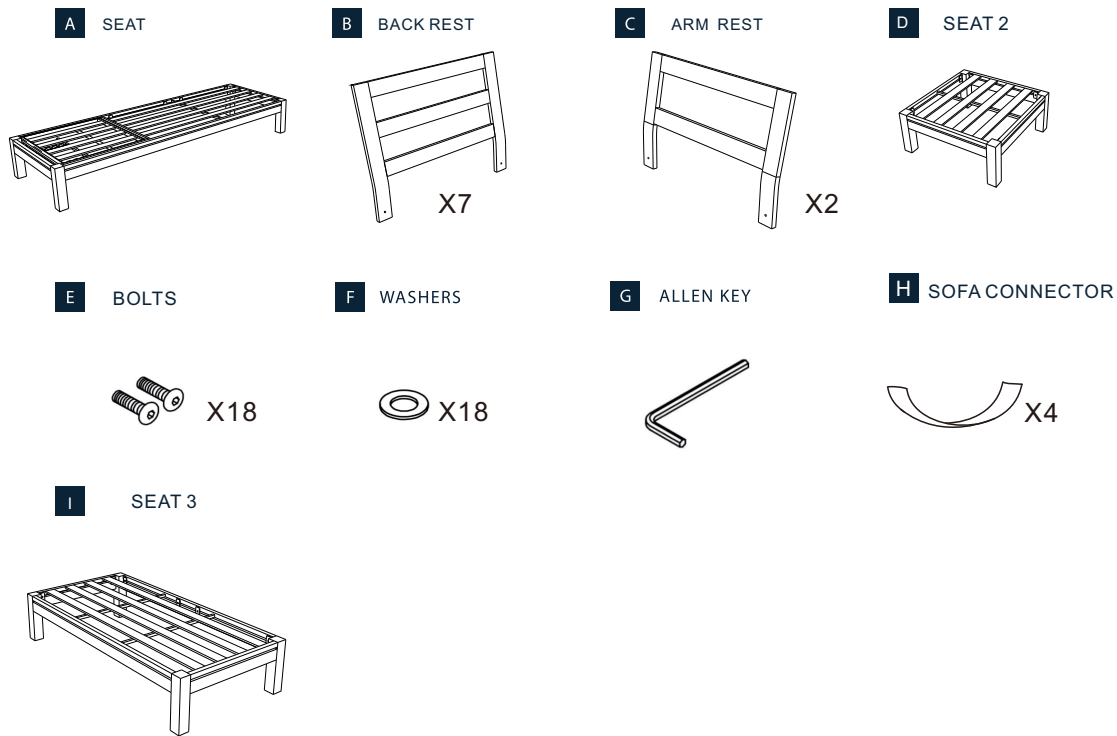
Dimension

210 X 280 cm



COMPONENT PARTS

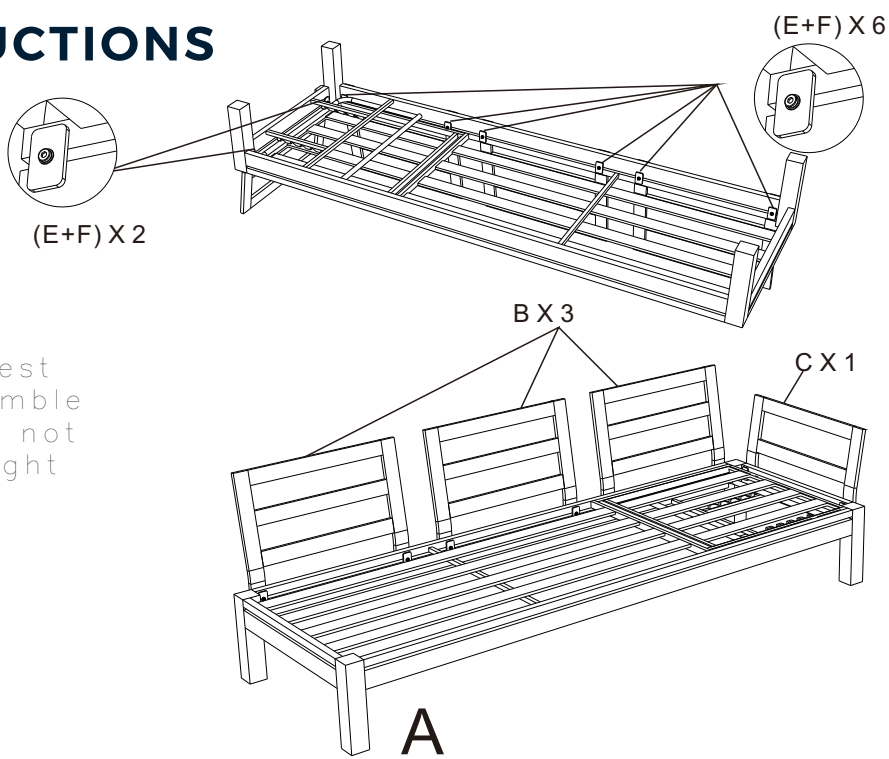
Please check if you have all the parts as listed below. Note: The quantities below are the correct amount to complete the assembly. In some cases more fittings may be supplied than are required.



ASSEMBLY INSTRUCTIONS

STEP 1

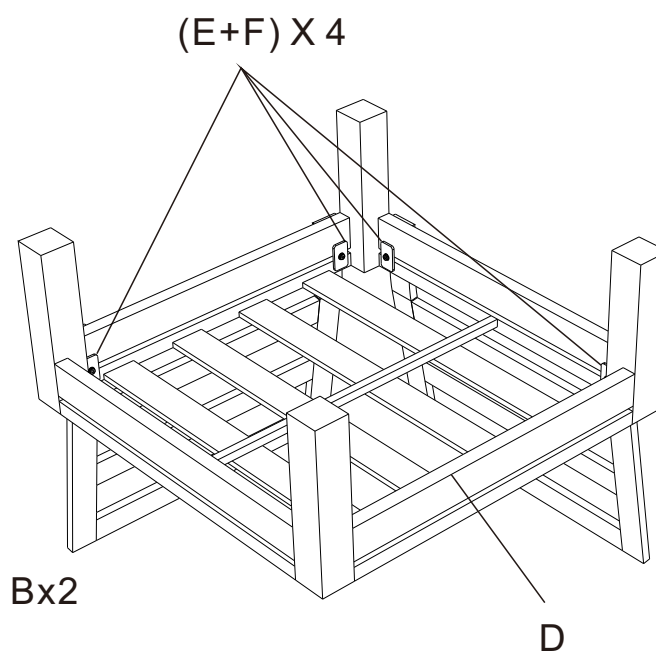
Ensure the armrest and backrest are at correct positions, assemble it with bolts and washers. Do not tighten screws, leave finger tight



STEP 2

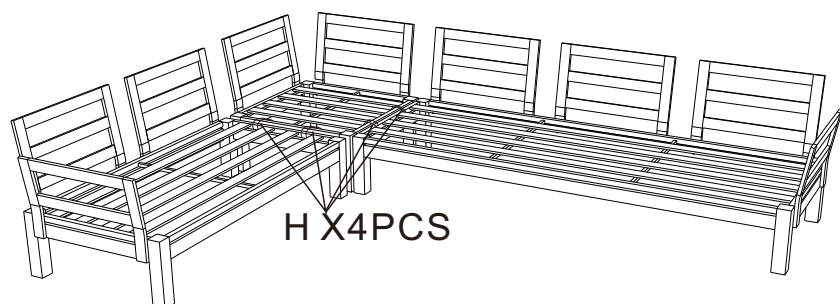
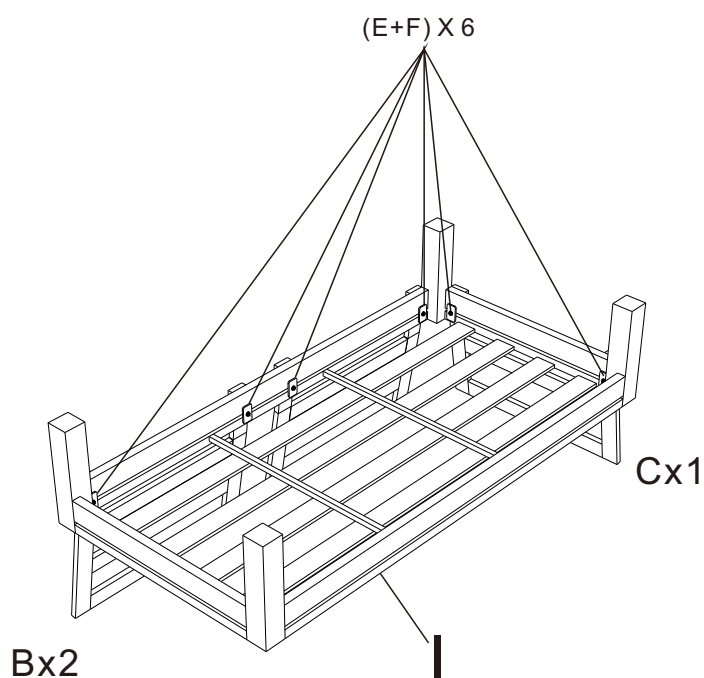
Ensure the backrest are at correct positions, assemble it with bolts and washers. Do not tighten screws, leave finger tight.

When all bolts are at correct positions, use allen key to tighten up all the screws.



STEP 3

Carefully turn the assembled sofa frame, and double check all the bolts are fully tightened.



Wrap the seats with sofa connector

Safety and Care Advice

KEEPING OOUTDOOR FABRIC LOOKING ITS BEST IS SIMPLE AND EASY.

- Use a sponge or soft brush to apply mild soap and warm water to the fabric.
- Rinse thoroughly.
- Air dry.

FOR STUBBORN STAINS OR MILDEW:

- Add one cup of bleach per gallon of soap and water.
- Apply directly to the stain.
- Use a sponge or soft brush to clean.
- Rinse thoroughly.
- Air dry.
- If necessary, repeat with additional bleach.

Always rinse thoroughly. Bleach won't harm the fabric, but it could damage clothing if not rinsed away.

All-Weather fabric air dries very quickly. Machine drying is unnecessary and high heat may damage the fabric.

